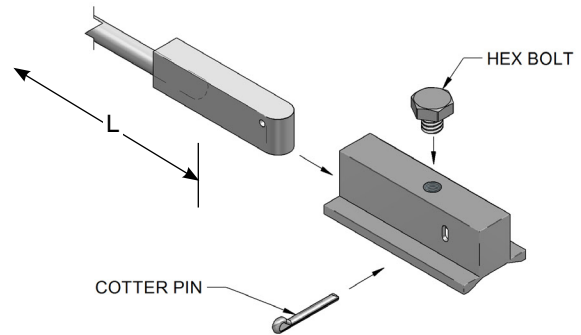
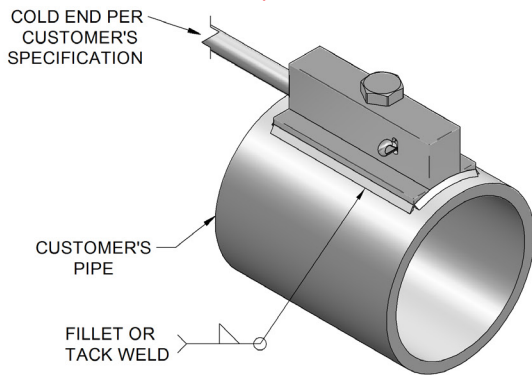


FASTTRAX

(Also referred to as the Removable Weld Pad design)



Note: To order this style as a thermocouple, see page 1-1, selection #6, options N and O in the JMS Ordering Catalog. For an RTD, see page 3-1, selection #4, option O.

APPLICATIONS

- Single or dual fired furnace tubes
- Top, side, or bottom fired furnace tubes
- Boiler tubes in power plants
- Catalyst tubes/tube sheath reactors (example: steam methane reformers, polygas units, acrylic acid units)
- Steam tracing lines
- Coker units
- External skin temperature for hydroprocessing units (example: hydrocracking, hydrotreating reactor)

INSTALLATION

- Installation or supervision available
- Supervision recommended
- Never burn up a thermocouple on install again
- E&I Tech can replace Fasttrax probe using only a ladder and a pair of pliers

LOW-COST REPLACEMENT

- Install hardware **ONE TIME**
- No need to scaffold furnace
- No grinding off existing TSTC
- No grinding down to base metal for welding (causes additional tube thinning)
- No welders necessary
- No moving Tubeskin TC out of the initial zone you want to measure because you cannot weld near last Tubeskin TC
- Re-order **ONLY** the replaceable probe

DESIGN

- Anti-slip cotter pin design
- Low profile heat shield
- Heavy-walled sheath
- Available in wrap-around design & parallel designs
- Available with S-Loops or expansion coils

HIGH RELIABILITY

- Fully protected probe
- S-Loops keep thermocouple sheath hidden and out of flame
- Clips placed on tube help hold thermocouple in place while process acts as a heat sink
- Wire contact **WON'T** slip from contact point due to JMS cotter pin design
- Safety
- Measure tube temperature, not process temperature
- Recognize tube wear and tube thinning
- Error set to high side of tube temperature-added safety
- Small offset allows you to push process furnace without sacrificing safety
- Highly accurate for safety
- Ceramic-filled heat shields may lead to low tube skin reading and compromise safety
- Large metal heat shields can absorb large amounts of radiant heat

HIGH ACCURACY

- High accuracy bare wire contact with tube surface
- Bare wire is the standard by which all tube skin thermocouples are tested for accuracy
- Low heat transfer from heat shield/lowest profile heat shield in the industry
- Reduces effects of radiant heat on thermocouple